

PISG Members Promote Pitcairn Research and Memorabilia

Pitcairn Islands Study Group members Mason Solomon and Dr. Donald Albert, together with Dr. Susan Elkins, promoted the Pitcairn Islands Research Station on September 26, 2023, at the Scholarly Innovation Research Fair. The Office of Research & Sponsored Programs of Sam Houston State University, Huntsville, Texas, organized this campus-wide event. Mason is an undergraduate history major, Dr. Elkins (not shown) is Head of Digital Initiatives, Newton Gresham Library, and Dr. Albert is a professor of geography in the Department of Environmental and Geosciences, all from Sam Houston State University.

The tall banner shown in the middle of the photograph highlighted the dissemination efforts to provide free access to posters, abstracts, magazine and journal articles through Scholarly Works @ SHSU. “Additionally, we took the opportunity to ‘show off’ stamp sheets, postcards, carvings, Hattie leaves, and rare books about Pitcairn Island,” Dr. Albert said. “I obtained these artifacts, with the exception of the books, via the PISG quarterly auction or the Classifieds in *The Pitcairn Log*. Special thanks to Larry and Beth Horrell who wanted to pass these carvings on to someone who would appreciate such treasures -- that turned out to be me. Beth’s mother (Cal or Carolyn Handley) and father (Thurston Handley) were avid travelers and members of the Pitcairn Islands Study Group; the carvings, except turtle, and Hattie leaves, were from their collections.”

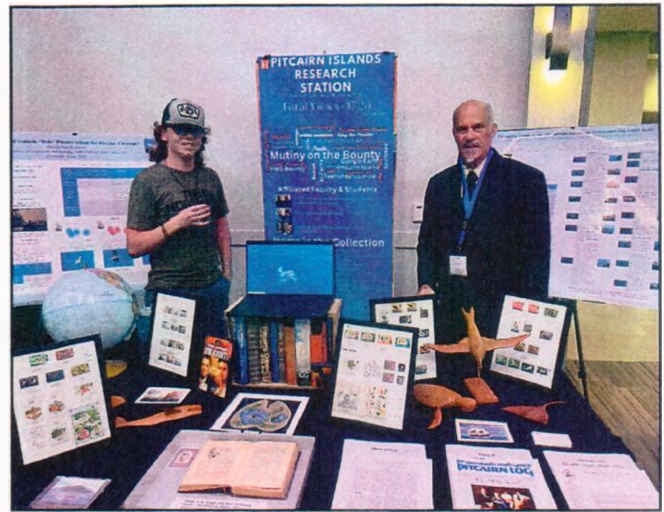


Photo Source: Ava Fujimoto-Strait
PISG members Mason Solomon, left, and Dr. Donald Patrick Albert at Scholarly Innovation Research Fair.

The Pitcairn Islands Research Station (PIRS) functions as a portal for studies involving the mutiny on the HMAV *Bounty* (April 28, 1789) and its aftermath. Our affiliate investigators include Donald Albert (Department of Environmental & Geosciences), Susan Elkins (Newton Gresham Library), Matthew Purifoy (Geography Major), and Mason Solomon (History Major). The purpose of PIRS is to disseminate studies (abstracts, posters, magazine and journal articles) online through Scholarly Works @ SHSU to Bounty/Pitcairn enthusiasts worldwide. The underlying themes of these studies have ranged from biogeography, isolated populations, to island feminism.

The public has viewed these studies almost 1,800 times from Scholarly Works @ SHSU over the last two years. PIRS maintains almost 100 books, including rare first or early editions. Further, the PIRS has collected first day covers (stamps), stamp exhibition entries, and postcards illustrating motifs depicting the *Bounty* or Pitcairn Island. PIRS possesses carvings (whales, sharks, birds, turtles, and a stingray), painted leaves, and other memorabilia emanating from Pitcairners. One developmental grant (2021), two internal grants (2022, 2023), and three Nancy and Jim Tiller Faculty Awards (2018, 2020, 2022) have supported research. Our most recent publication is “Repositioning Pitcairn’s Tapa: Detecting the Voices of the Forgotten Women of Bounty,” appearing in the *Okinawan Journal of Island Studies* (2023). In support of this initiative, Dr. Albert has traveled to California (Pitcairn Islands Study Center), Oahu (U.S.), Tahiti and Moorea (French Polynesia), Australia (Sydney), and New Zealand.

Visit us on the web at
www.pisg.net

**The Pitcairn Log is published in
January, April, July, and October.**

It is the official publication of the
Pitcairn Islands Study Group,
which was founded in the U.S. in 1973.
American Philatelic Society Affiliate No. 46.



MEMBERSHIP INFORMATION

Membership is available in two categories:

REGULAR and **CONTRIBUTING**.

Fees in the U.S. are: **REGULAR**: \$22 per year (\$23.50 PayPal). **CONTRIBUTING**: \$30 or more. For international rates, please contact the Secretary. The *Pitcairn Log* is sent by First Class mail. An email pdf version is available for \$15 per year. Opinions expressed are those of the authors and not necessarily those of PISG. Advertising is available at \$50 per full page, \$25 per half page, and \$15 per quarter page, per issue. Contact the Publications Editor for additional information.